

Let's Talk Dusty!

The Ultimate Forum for Dusty Springfield Fans

[Skip to content](#)

[Advanced search](#)

- [Board index](#) < [Let's Talk Dusty! The Forum](#) < [Don't Forget About Me](#)
- [Change font size](#)
- [Print view](#)

- [FAQ](#)
- [Register](#)
- [Login](#)

[Henley Standard](#)

[Post a reply](#)

9 posts • Page 1 of 1

[Henley Standard](#)

by [daydreamer](#) » Mon Jun 02, 2014 9:13 pm

This piece has just appeared in the Henley paper.

Pathway to peace

Published 02/06/14

ONE of Tony Lane's final wishes was to have his ashes interred next to singer Dusty Springfield at St Mary's Church in Henley.

The funeral for the record-breaking town mayor took place at the church last month. But his ashes had to be buried about five yards away from the singer, who died in 1999.

Rev Canon Martyn Griffiths, rector of St Mary's, tells me that the land to the left of the path is not open for burial and special dispensation had been given for Springfield's burial there.

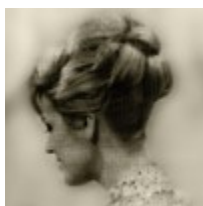
"All others are buried on the right side of the path and will be until that is finished," he says. "We will then have to apply for permission from the chancellor of the diocese to continue on the other side."

Rest in peace, both.

Published 02/06/14

[There's a part of you, that's a part of me...](#)

Carole x



[daydreamer](#)

Moderator



Posts: 3667

Joined: Thu Dec 17, 2009 8:17 am

Location: Cheshire, England

[Top](#)

[Re: Henley Standard](#)

by [Cas19](#) » Tue Jun 03, 2014 5:24 am

Thank you Carole. I kind of look on that spot as being Dustys and Dustys alone. It may sound a bit mean, but it would spoil it if anyone else had a marker there.

Casx

Something in your eyes



[Cas19](#)

All I see is you



Posts: 23263

Joined: Thu Dec 17, 2009 8:25 am

[Top](#)

[Re: Henley Standard](#)

by [dusty nut](#) » Tue Jun 03, 2014 6:25 am

Thank you for the article Carole. I have to agree with Cas, you could have a rush of her many

fans wanting to be buried there and it would spoil it. 🌹

Lynn x

Nothing turns the day on, when the world is yawning



[dusty nut](#)

Someone who cares



Posts: 5618

Joined: Thu Apr 04, 2013 12:17 pm

[Top](#)

[Re: Henley Standard](#)

by [daydreamer](#) » Tue Jun 03, 2014 7:20 am

I doubt the church council would let that happen. This man was very special to Henley, which would have given his request some credence. He'd lived and had a business in the town all his life and was mayor 4 times. I have a vague memory from being in Henley in April, of a tree having been planted quite near to Dusty's marker, anyone else remember seeing that and if it had a plaque or anything on it?

There's a part of you, that's a part of me...

Carole x



[daydreamer](#)

Moderator



Posts: 3667

Joined: Thu Dec 17, 2009 8:17 am

Location: Cheshire, England

[Top](#)

[Re: Henley Standard](#)

by [Cas19](#) » Tue Jun 03, 2014 7:23 am

Ummm! Even so I still wouldn't like it no matter who he was.

Casx

Something in your eyes



[Cas19](#)

All I see is you



Posts: 23263

Joined: Thu Dec 17, 2009 8:25 am

[Top](#)

[Re: Henley Standard](#)

by [pat.dunham](#) » Tue Jun 03, 2014 11:01 am

Thanks for post Carole. I don't think non-residents or non parish members would be able to be interred near Dusty, so she should be safe for a little while yet. I feel sure that Dusty used St Marys, latterly, more than we know. I'd rather see the world the way it used to be.....
..I'm goin' back.

Pat x



[pat.dunham](#)

Can I get a witness



Posts: 4601

Joined: Wed Jun 06, 2012 6:41 pm

Location: Hertfordshire UK

[Top](#)

[Re: Henley Standard](#)

by [daydreamer](#) » Tue Jun 03, 2014 2:41 pm

I'm not saying I would either Cas! I just think that they had to give his request some thought because of his status in the town. I doubt that in my lifetime, she will have to share that particular piece of land.

There's a part of you, that's a part of me...

Carole x



[daydreamer](#)

Moderator



Posts: 3667

Joined: Thu Dec 17, 2009 8:17 am

Location: Cheshire, England

[Top](#)

[Re: Henley Standard](#)

by [trek007](#) » Tue Jun 03, 2014 7:34 pm

I too remember a tree with a plaque, but didn't read the plaque 🤔

This ex mayor is obviously a special resident of Henley so 5 yards away seems fair.
[Trekx. Often called Carole.](#)

[Ev'rything's coming up Dusty.](#)



[trek007](#)

Can I get a witness



Posts: 4227

Joined: Thu Dec 17, 2009 8:32 am

Location: England

[Top](#)

[Re: Henley Standard](#)

by [jennifer49](#) » Tue Jun 03, 2014 9:16 pm

I don't recall seeing a tree or a plaque while I was there, but did have the idea of looking through the photos I took to see if they might reveal anything but unfortunately no, mine are all closeups of the marker, a bit too close some of them, mine don't even show the bench or the houses with the blue doors, just didn't stand back far enough.

Jennifer



[jennifer49](#)

I'll try anything



Posts: 224

Joined: Sun May 05, 2013 10:32 pm

[Top](#)

Display posts from previous: Sort by

[Post a reply](#)

9 posts • Page 1 of 1

[Return to Don't Forget About Me](#)

Jump to:

Who is online

Users browsing this forum: Google [Bot] and 11 guests

- [Board index](#)
- [The team](#) • [Delete all board cookies](#) • All times are UTC

Powered by [phpBB®](#) Forum Software © phpBB Group :: Style: [L_Antre](#)