

Let's Talk Dusty!

The Ultimate Forum for Dusty Springfield Fans
<http://www.dustyspringfield.org.uk/forum/>

Dusty costume sketch

<http://www.dustyspringfield.org.uk/forum/viewtopic.php?f=8&t=4893>

Dusty costume sketch

by **Beautiful soul**

Page 1 of 1

Posted: **Mon Mar 11, 2013 11:17 pm**

Does anyone recognize this costume? If it was actually made and worn-- does anyone have any info or better yet photos of Dusty wearing it? I apologize my memory isn't as good as the experts. 🙄 Thanks! 😊



Costume Sketch for Dusty Springfield
Boyd Clopton (United States, 1935-1989)
United States, 1972

Drawings

Ink on vellum mounted on cardboard matte with fabric swatches

8 1/2 x 14 in. (21.59 x 35.56 cm)

Gift of Elliott and Carolyn Mittler (M.77.171.182)

Costume and Textiles

Some more...



image.jpg (8.46 KiB) Viewed 3321 times



image.jpg (3.35 KiB) Viewed 3321 times

This link is the homepage..Maggie has thoughtfully posted a more direct link below in her post to just the Dusty related pictures. Thanks Maggie you are wonderful!! 🙌👍👍

<http://collections.lacma.org/node/169488>

Re: Dusty costume sketch

by **allherfaces**

Posted: **Mon Mar 11, 2013 11:26 pm**

No idea, but interesting find. 🙌👍
(I'm referring to the first one you posted.)

Is it possible to get larger photo sizes? Some of the others look familiar.

Re: Dusty costume sketch

by **Beautiful soul**

Posted: **Mon Mar 11, 2013 11:30 pm**

Two more...



image.jpg (7.2 KiB) Viewed 3321 times



image.jpg (4.63 KiB) Viewed 3321 times

Re: Dusty costume sketch

by IWannaBeABluesSinger

Posted: **Mon Mar 11, 2013 11:40 pm**

It looks a bit like this one:



1972 - Purple Dress.JPG (119.3 KiB) Viewed 3321 times

And these two are similar:



You'll find them here:

<http://www.lacma.org/search/node/dusty%20springfield>

Maggie

Re: Dusty costume sketch

by **Beautiful soul**

Posted: **Tue Mar 12, 2013 2:55 am**

Thank you for your help Maggie! Copying and posting images from websites to the forum from a phone has its limitations. 😊 are these any better? 😊





Re: Dusty costume sketch

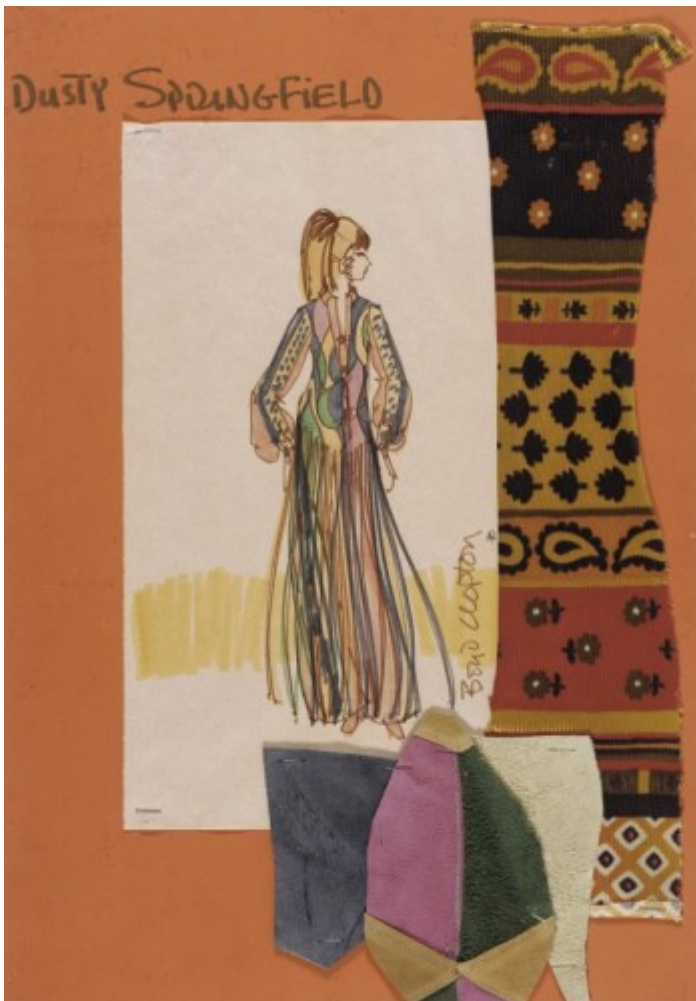
by **IWannaBeABluesSinger**

Posted: **Tue Mar 12, 2013 3:10 am**

Actually I think these two are a closer match - with a few alterations. The sleeve design is the same, whereas the first one you put up has pink chiffon sleeves:



1972%20-%20Purple%20Dress.JPG (119.3 KiB) Viewed 3299 times



Re: Dusty costume sketch

by **Beautiful soul**

Posted: **Tue Mar 12, 2013 3:13 am**

Maggie, have you ever seen a full length view of this dress, the first one? I think you found the blue one spot on! 🤔

Would it be too much to find out which shows these were worn on?

Re: Dusty costume sketch

by **allherfaces**

Posted: **Tue Mar 12, 2013 4:04 am**

Can't find a better picture of it ATM but this is the outfit that one of the sketches reminds me of.

Re: Dusty costume sketch

by **Beautiful soul**

Posted: **Tue Mar 12, 2013 4:12 am**

Yes it's similar, and has the stringy bits. Looks like the same half moon shape just under the arm as in the photo. The fabric swatch has a distinct paisley amoeba shape on it. Can you see it better on a larger screen? I can't zoom in without losing focus. 🤔

Re: Dusty costume sketch

by **allherfaces**

Posted: **Tue Mar 12, 2013 4:20 am**

neither Maggie's nor mine has the same neckline as the drawing. It was the stingy bits in the 'skirt' that made me think it might be similar.

I know so little about costuming though...maybe these sketches were 'ideas' that were later modified...?

Meantime, maybe I will find another photo of this garment, or perhaps someone else will.

Re: Dusty costume sketch

by **daydreamer**

Posted: **Tue Mar 12, 2013 9:08 am**

What a brilliant find 🤔 I don't recognise the top one but I feel that I should! It's like I saw it once but now I have no idea 🤔 As soon as I saw the one with skirt tassles I thought of the outfit that Nancy has posted, maybe they just tweaked it or it was made with skirt or pants. I instantly thought of this dress (but can't find a more flattering photo right now!) that could be the one with arm tassles, if it isn't I'd still think it was one of their designs.



Re: Dusty costume sketch

by **Cas19**

Posted: **Tue Mar 12, 2013 9:32 am**

Just seen this Connie, great finds, all your surfing is paying off! 😊 😊
Just love seeing all of these, I will study them and see what comes to mind.
Thank you Connie.
Casx

Re: Dusty costume sketch

by **Beautiful soul**

Posted: **Tue Mar 12, 2013 9:33 am**

daydreamer wrote:

What a brilliant find 😊 I don't recognise the top one but I feel that I should! It's like I saw it once but now I have no idea 😞 As soon as I saw the one with skirt tassles I thought of the outfit that Nancy has posted, maybe they just tweaked it or it was made with skirt or pants. I instantly thought of this dress (but can't find a more flattering photo right now!) that could be the one with arm tassles, if it isn't I'd still think it was one of their designs.

The attachment **Scan-130312-0001.jpg** is no longer available



Wow Carole! I don't think I've seen your picture before . Had to see them closer together to compare the fabric swatches. Even the hairstyles look the same. I think you're right-- they must be related. Thank you for posting!
👏🤔🌟

Ps... See the new thread "Boyd Clopton" for more designs by this costumer for other artists.

Re: Dusty costume sketch

by **Corinna**

Posted: **Tue Mar 12, 2013 10:55 am**

Absolutely wonderful! What a discovery! Thanks for this, Connie! 😊

Re: Dusty costume sketch

by **Cas19**

Posted: **Tue Mar 12, 2013 2:41 pm**

Is this the blue one that Maggie posted, its the only full length one I can find. I don't suppose its really clear enough. I will keep looking.

 Image

Casx

Re: Dusty costume sketch

by **karen**

Posted: **Tue Mar 12, 2013 3:09 pm**

Yes Connie well done you , nice to come up with these.. 🙌👍

Re: Dusty costume sketch

by **Beautiful soul**

Posted: **Tue Mar 12, 2013 3:54 pm**

Thanks everyone! I'm so glad to have found something that perhaps hasn't been seen yet-- it's so hard with this number of professional researchers and web combers! 😊 Thrilled everyone is enjoying this thread 👍

Do we consult the bible for clues as to which shows Dust wore these on? Any ideas? I'm thinking since its the 70's and it's an American designer, we need to look at her appearances stateside. Was it before or after Dusty moved to California? Still looking for more photos of Dusty in these dresses too-- no luck yet on the turquoise one?

Great job so far! 🙌👍

P.s. does anyone think the signatures on two of the signed at the bottom look a lot like Dusty's ? Maybe just a coincidence.

Re: Dusty costume sketch

by **allherfaces**

Posted: **Tue Mar 12, 2013 4:27 pm**

You got me googling Dusty and costumes and one of the things I found was this:



It's from this website, which also has a few other Dusty items.
<http://www.asplashofred.com.au/#!>

The costumes are recreations or reinterpretations of Dusty costumes, worn by Sheena Crouch in her Dusty show which apparently was done in Australia in 2011.

<http://www.thedustyspringfieldshow.com/index.html>

Re: Dusty costume sketch

by **Cas19**

Posted: **Tue Mar 12, 2013 7:00 pm**

P.s. does anyone think the signatures on two of the signed at the bottom look a lot like Dusty's ?
Maybe just a coincidence.[/quote]

I don't feel its Dustys signature Connie. I can't recall seeing Dusty write her Es like that to start with.

Casx

Re: Dusty costume sketch

by **darren2722**

Posted: **Tue Mar 12, 2013 7:22 pm**

Great Thread(s) 😊 Connie. 😊 Good finds everyone. 🙌🙌

Re: Dusty costume sketch

by **Dotty86**

Posted: **Tue Mar 12, 2013 9:11 pm**

Wow what a fascinating thread. Really interesting to see the sketches. Thank you 🙌🙌

Re: Dusty costume sketch

by **pat.dunham**

Posted: **Wed Mar 13, 2013 9:41 pm**

Just a thought, maybe the blue dress in the pics is the one she wore on the Engelbert duet "Ain't no mountain high enough". Year? (should have looked in PH).

Re: Dusty costume sketch

by **Beautiful soul**

Posted: **Wed Mar 13, 2013 10:07 pm**

pat.dunham wrote:

Just a thought, maybe the blue dress in the pics is the one she wore on the Engelbert duet "Ain't no mountain high enough". Year? (should have looked in PH).

Pat wins the first prize-- first to identify where Dusty wore one of these dresses! 🙌👉👈
Maggie has the honor of being the first to match a dress--this dress --to a sketch. 🙌👉👈

Dusty Springfield - Ain't no mountain high enough



👹 when I was a kid I thought englebert was part werewolf... he kinda scared me....shows you what kind of kid I was 😂

Re: Dusty costume sketch

by **pat.dunham**

Posted: **Wed Mar 13, 2013 10:37 pm**

Just checked with PH. EH show on ATV (UK) 5 July 1970.
Thought possibly earlier, mainly because of her hair.

Re: Dusty costume sketch

by **Beautiful soul**

Posted: **Thu Mar 14, 2013 1:14 am**

It would seem that interest in Dusty's style continues even today, the huffington post saw fit to guide women to achieving the "Dusty Springfield" look in a relatively recent article...

http://www.huffingtonpost.com/mobileweb/2012/05/03/dusty-springfield-style_n_1468561.html



Re: Dusty costume sketch
by Beautiful soul

No seminar would be complete without a makeup tutorial. 😊 I'll be researching for a tutorial on wig husbandry --stay tuned 😊👑

Dusty Springfield Makeup Tutorial by Rimmel Lon...



Re: Dusty costume sketch

by **IWannaBeABluesSinger**

Posted: **Thu Mar 14, 2013 8:55 am**

pat.dunham wrote:

Just a thought, maybe the blue dress in the pics is the one she wore on the Engelbert duet "Ain't no mountain high enough". Year? (should have looked in PH).

I think it is too - I put a screen capture up on page one of this thread.

Maggie

Re: Dusty costume sketch

by **trek007**

Posted: **Thu Mar 14, 2013 4:10 pm**

A really interesting thread, thanks Connie for finding the sketches. 🌟

It's obvious that most of them were made up and worn by Dusty.

From my experience of dress design (I trained in dress design and Home Economics) slight changes to sketches are often made due to a variety of reasons. So the dresses may not match the sketches exactly.

The wearer may request a few adjustments, in this case Dusty. They may make some changes once the fabric is chosen, depending on whether it will fit the design.

Once the paper pattern has been made it is often made up in a cheap fabric and tried on a dummy for adjustments before it is made in a more expensive cloth.