

Let's Talk Dusty!

The Ultimate Forum for Dusty Springfield Fans

Skip to content

<input type="text" value="Search..."/>	<input type="button" value="Search"/>
Advanced search	

Similar but different..

Post a reply

<input type="text" value="Search this topic..."/>	<input type="button" value="Search"/>
---------------------------------------------------	---------------------------------------

64 posts • Page **1** of **1**

Similar but different.. (#p39829)

by **Carole R.** » Thu Nov 11, 2010 10:23 pm

Which pic of Dusty does this remind you of?



Top

Re: Similar but different.. (#p39839)

by **karen** » Thu Nov 11, 2010 10:37 pm

Would it be this one Carole.. 🙄

Attachments

acdust444 Chess..jpg (58.33 KiB) Viewed 2917 times

Top

Re: Similar but different.. (#p39841)

by **Carole R.** » Thu Nov 11, 2010 10:45 pm

😊 Correctimondo, Karen. 😊

Now, Which of Dustys hats is Doris wearing?.Mmm,.Maybe I should say,.From **which** pic?



CR xx

Top

Re: Similar but different.. (#p39857)

by **karen** » Fri Nov 12, 2010 9:04 am

Mike Hurst's Wedding.... [won't do next one 😊

Attachments

mikehurstwedding.jpg (10.42 KiB) Viewed 2889 times

Top

Re: Similar but different.. (#p39860)

by **Carole R.** » Fri Nov 12, 2010 9:19 am

😊 ..Thats the one!!

Which Dusty pic does **this** remind you of?




CR xx

Top

Re: Similar but different.. (#p39867)

by **daydreamer** » Fri Nov 12, 2010 9:57 am

Could be a few, but possibly this?

 dusty_springfield_once_upon_a_time_packshot.jpeg

dusty_springfield_once_upon_a_time_packshot.jpeg (20.14 KiB) Viewed 2876 times

Top

Re: Similar but different.. (#p39868)

by **Carole R.** » Fri Nov 12, 2010 10:14 am

☹️ Nope.... I'm thinkin of the one where she *is* in the spotlight looking at the audience, but *we* see her from the back of the stage. 🌟

CRxx

Top

Re: Similar but different.. (#p39869)

by **karen** » Fri Nov 12, 2010 10:15 am

Different choice. 😊

Attachments

alberthall.jpg (33.45 KiB) Viewed 2869 times

Top

Re: Similar but different.. (#p39870)

by **karen** » Fri Nov 12, 2010 10:16 am

Obviously the wrong one then , posted same time as your reply to Carole... Carole... 😊

Top

Re: Similar but different.. (#p39877)

by **SweMaria** » Fri Nov 12, 2010 11:31 am

karen wrote:

Obviously the wrong one then , posted same time as your reply to Carole...
Carole... 😊

That picture can never be wrong, Karen... 😊

Top

Re: Similar but different.. (#p39898)

by **Cas19** » Fri Nov 12, 2010 3:04 pm

Carole R. wrote:


[:]) ..Thats the one!!

Which Dusty pic does *this* remind you of?



CR xx

As soon as I saw it I thought of this one Carole.

 Image

Casx

Top

Re: Similar but different.. (#p39899)

by **Carole R.** » Fri Nov 12, 2010 3:07 pm

 Thankyou Cas!!!!... I was starting to think i'd lost the plot...  

Do 'we' have a full length version of that pic?..I'm sure I've seen one.

I do see where Carole and Karen are coming from.. They've looked at the spotlight, arms and hands, but its the back view that reminds me of the the Edith Piaf one... I think it must be ever so lonely up there in the spotlight.

CR xx

Top

Re: Similar but different.. (#p39974)

by **Cas19** » Sat Nov 13, 2010 9:26 am

Oh! I'm pleased I was on the same wave length! I can't think that I have the full length version, but I'll look through my pictures later on. I'd be interested in seeing it if there is one.


Casx

Top

Re: Similar but different.. (#p39976)

by **Cas19** » Sat Nov 13, 2010 9:35 am

This is the only one I can think that may be similar, but its a side on shot rather than back view.

 Image

Casx

Top

Re: Similar but different.. (#p39994)

by **Cardiff Bluesgirl** » Sat Nov 13, 2010 11:07 am

a nice one anyway even if not the one Carole is after. 😊
and I think she had lost the plot a long time ago 😊

Top

Re: Similar but different.. (#p39998)

by **Carole R.** » Sat Nov 13, 2010 11:28 am

Cardiff Bluesgirl wrote:

:

and I think she had lost the plot a long time ago 😊

Thankyou Liz... You are soooooooooooooooooooooo right!.. 😊😊

Also thanks Cas.. Maybe a mix of your spotlight ones were what I was thinking of... 🙌

..and now in our quest to find the Site's *ultimate* mindreader, here's another.. 😊

Its 'our Gracie' but which *Dusty* pic does this remind *me* of?.. 🤔




CR xx

Top

Re: Similar but different.. (#p40007)

by **Cas19** » Sat Nov 13, 2010 12:46 pm

Howabout this one Carole?!

 Image

Casx

Top

Re: Similar but different.. (#p40052)

by **Carole R.** » Sat Nov 13, 2010 10:38 pm

Thats exactly right, Cas!... 🙌

CR xx

Top

Re: Similar but different.. (#p40098)

by **Cas19** » Sun Nov 14, 2010 12:28 pm

Enjoying these Carole....wheres the next one from you??

Casx

Top

Re: Similar but different.. (#p40165)

by **Carole R.** » Sun Nov 14, 2010 11:08 pm

This is Annie Lennox... 😊



Which Dusty Pic does it remind you of?... (easy peasy).. 😊 😊

CR xx

Top

Re: Similar but different.. (#p40180)

by **daydreamer** » Mon Nov 15, 2010 7:48 am

Lemon squeezy 😊

 AVFL.jpg

AVFL.jpg (69.41 KiB) Viewed 2472 times

Top

Re: Similar but different.. (#p40183)

by **Cas19** » Mon Nov 15, 2010 7:57 am

Yes has to be !

Casx

Top

Re: Similar but different.. (#p40196)

by **Carole R.** » Mon Nov 15, 2010 9:28 am

Of Course!... 😊

What about this one?



CR xx

Top

Re: Similar but different.. (#p40207)

by **Cas19** » Mon Nov 15, 2010 11:02 am

Nothing really comes to mind with this one Carole, so I will be interested to see which one you are thinking of.


Casx

Top


Re: Similar but different.. (#p40208)

by **Corinna** » Mon Nov 15, 2010 11:37 am

Hmmmm, I'm thinking of D signing autographs in a car, but we've had that one. Can't think of one that totally fits. But here's one with sunglasses (might fit if reversed), and one in a car.... 🤔 ?

 pix5copy.jpg

pix5copy.jpg (12.66 KiB) Viewed 2457 times

 Dustyandmecopy.jpg

Dustyandmecopy.jpg (10.97 KiB) Viewed 2457 times

PS: The "Dustyandme" is obviously not "me", but Carole G. 😊

Top

Re: Similar but different.. (#p40238)

by **Carole R.** » Mon Nov 15, 2010 5:49 pm

Okay... Here I admit to not owning many of these pics, I've just been doing this from memory of all the pics I've seen over the years. 😊

Cor,I think the one in the car is the nearest I had in my memory, but I thought she was signing autographs not looking at a map or whatever that piece of paper is.

Maybe I should quit whilst I'm ahead(not really!) 🤔 😊 now.. and throw this thread out to anyone else who's interested.

I may *just* come up with one or two more, but don't hold yer breath!!! 🤪
CR xx

Top

Re: Similar but different.. (#p40247)

by [daydreamer](#) » Mon Nov 15, 2010 7:16 pm

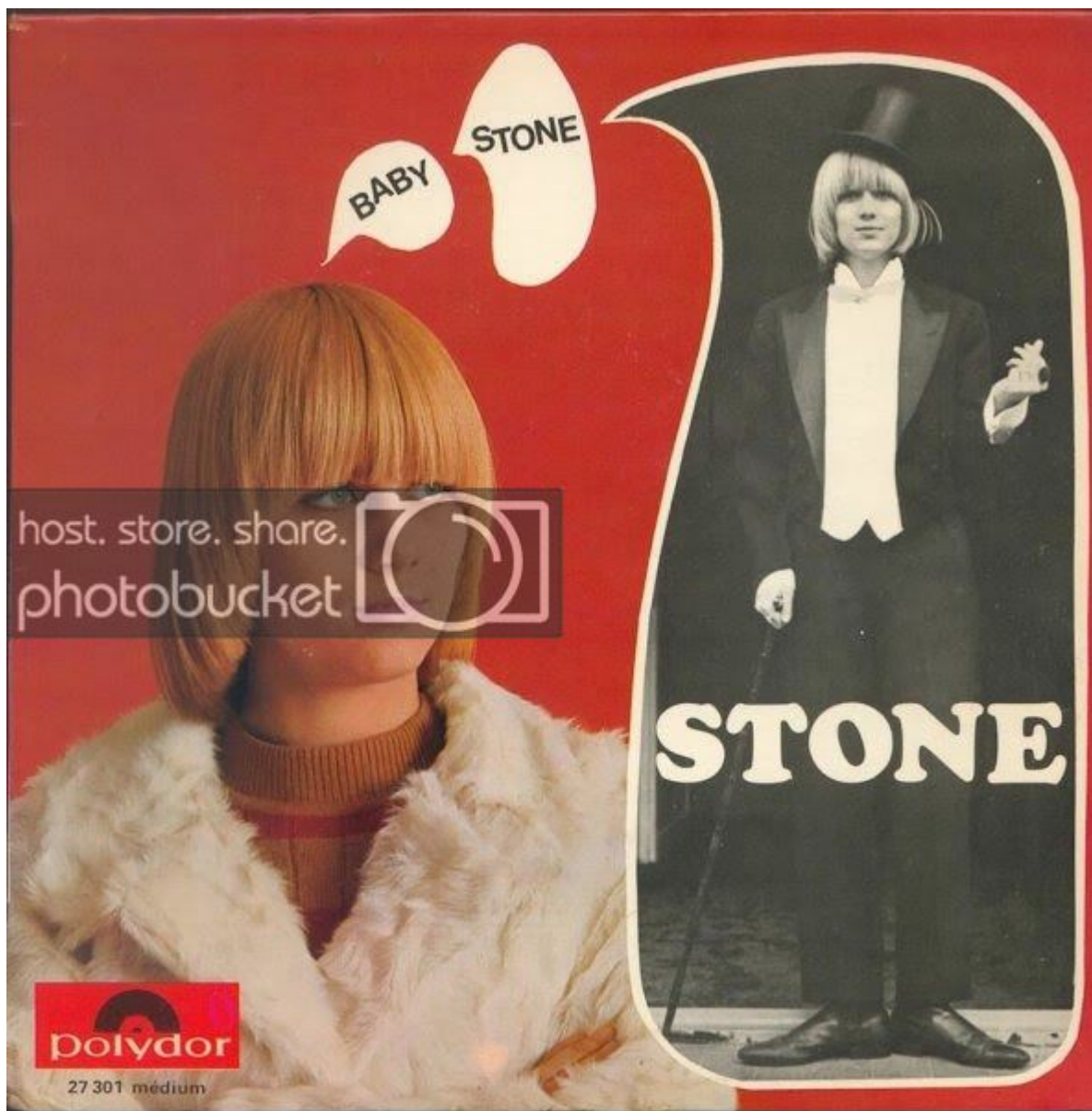
That was no map, that was my copy of Ev'rything's Coming Up Dusty! 😊

Top

Re: Similar but different.. (#p40251)

by [jessicarc14](#) » Mon Nov 15, 2010 8:02 pm

What about this one? 🤪



Top

Re: Similar but different.. (#p40254)

by [Corinna](#) » Mon Nov 15, 2010 8:38 pm

Same wig! 😊



(./download/file.php?

id=3070&mode=view)

Top

Re: Similar but different.. (#p40259)

by jessicarc14 » Mon Nov 15, 2010 8:58 pm

Corinna wrote:

Same wig! 😊

redwig.jpg

Yes Corinna! 🤔 Do you know why she's wearing that wig?

Top

Re: Similar but different.. (#p40262)

by **Chris80** » Mon Nov 15, 2010 9:06 pm

This wig reminds a bit of Angela Merkel! 🤪

Top

Re: Similar but different.. (#p40265)

by **jessicarc14** » Mon Nov 15, 2010 9:11 pm

Chris80 wrote:

This wig reminds a bit of Angela Merkel! 🤪

🤪 🤪 Well thought, Chris!



Top

Re: Similar but different.. (#p40271)

by **Corinna** » Mon Nov 15, 2010 9:39 pm

Poor Angela! 😊

Dusty had that red wig when she sang "Am I The Same Girl". I guess it seemed like a good idea at the time...

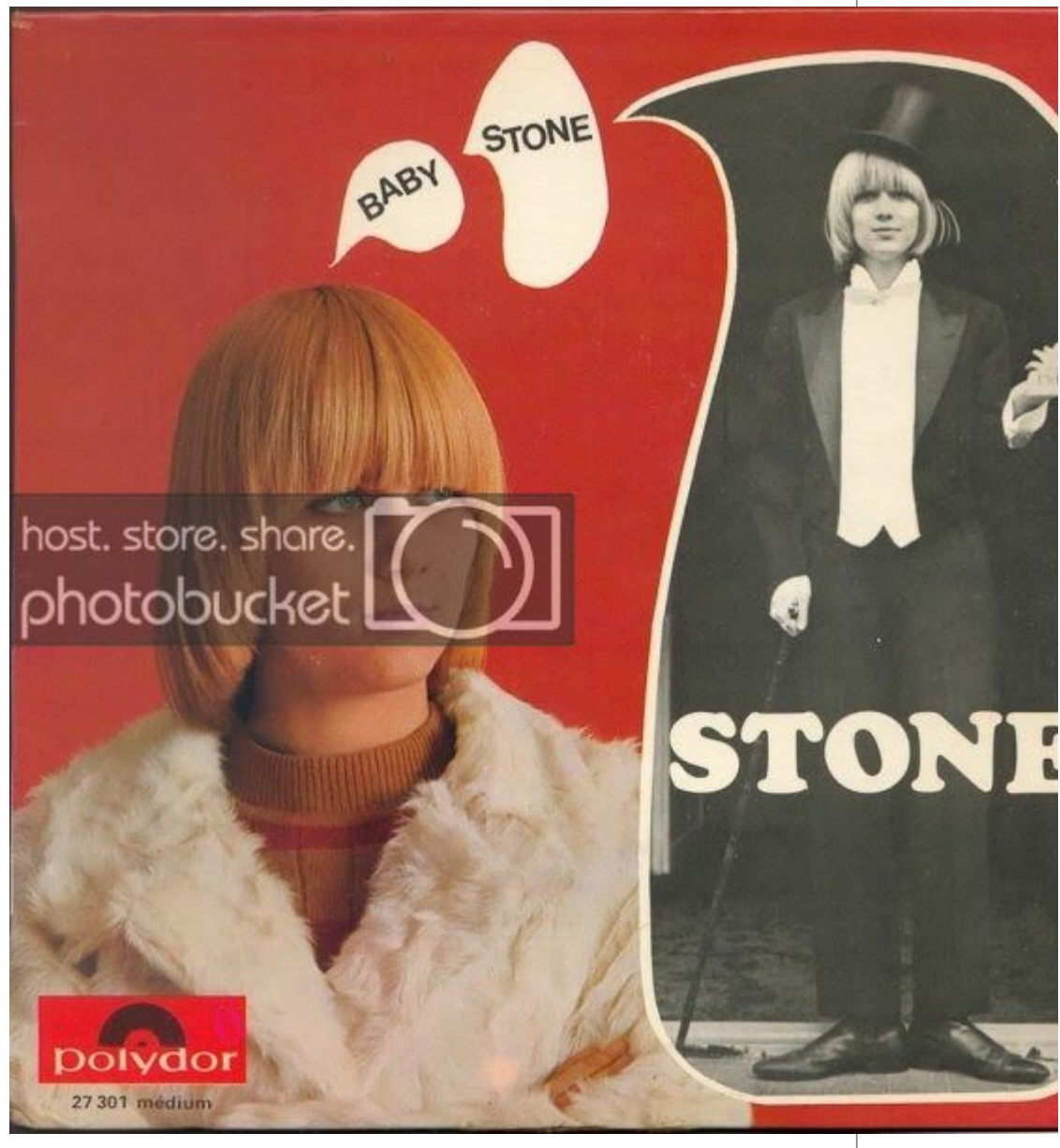
Top

Re: Similar but different.. (#p40273)

by **neonouille** » Mon Nov 15, 2010 9:45 pm

jessicarc14 wrote:

What about this one? 🤖



And for the black and white:

 orange 2.jpg

orange 2.jpg (31.43 KiB) Viewed 2402 times

Top

Re: Similar but different.. (#p40277)

by [jessicarc14](#) » Mon Nov 15, 2010 10:07 pm

Nice! Never saw this one before 🤖

Top

Re: Similar but different.. (#p40280)

by [Carole R.](#) » Mon Nov 15, 2010 10:27 pm

I'm really glad that you joined in this thread, Jessica. 🙌

I was running out of examples. 😬

...your pic 'lookalike ' was excellent...Better than most of mine in fact. 🤔 😊

CR xx

Top

Re: Similar but different.. (#p40373)

by Sara » Wed Nov 17, 2010 12:30 am

OMG 🤩 that has to be Dusty's worst wig ever! 🤩

Sorry Dusty! ❤️

Sara x

Top

Re: Similar but different.. (#p41937)

by Carole R. » Tue Dec 07, 2010 1:56 pm

So...which Dusty Pic does this remind you of:

Caution: **ONLY** look at the face.



CRxx

Top

Re: Similar but different.. (#p41965)

by Cardiff Bluesgirl » Tue Dec 07, 2010 6:46 pm


I think there are quite a few but there is one in particular that comes to mind, however I will leave that for someone else and offer these instead 😊

 RAH-9.jpg

RAH-9.jpg (29.58 KiB) Viewed 2325 times

 book14a.jpg

book14a.jpg (15.84 KiB) Viewed 2325 times

 RecordingAVFL.jpg

RecordingAVFL.jpg (42.7 KiB) Viewed 2325 times

Top

Re: Similar but different.. (#p41992)

by **Carole R.** » Tue Dec 07, 2010 9:43 pm

Nice try Liz (especially your second one) but no cigar this time... and I think you have a good idea which one *I* have in mind. 😊

CR xx

Top

Re: Similar but different.. (#p41994)

by **Cardiff Bluesgirl** » Tue Dec 07, 2010 9:53 pm

Carole R. wrote:

Nice try Liz (especially your second one) but no cigar this time... and I think you have a good idea which one *I* have in mind. 😊

CR xx

yes I know the one you mean 😊 but someone else will get it I know. I just think there are so many that are nearly the one and its a good excuse to put them on. two great ladies,nice to just look at them both. 😊

Top

Re: Similar but different.. (#p41996)

by **daydreamer** » Tue Dec 07, 2010 10:36 pm

Looking in a different direction but could be this one....

 imagesCAOIEN1.jpeg

imagesCAOIEN1.jpeg (6.8 KiB) Viewed 2674 times

Top

Re: Similar but different.. (#p42006)

by **Carole R.** » Tue Dec 07, 2010 11:03 pm

Of course your'e right, Carole!! 🙌

Here she is looking in the *right* direction.



and heres the Diana pic again.. I wonder if anyone could crop this photo down??



CR xx

Top

Re: Similar but different.. (#p42031)

by **Cardiff Bluesgirl** » Wed Dec 08, 2010 9:19 am

yep that was the one. I thought somehow Carole G would be posting it 🤔

Top

Re: Similar but different.. (#p42235)

by **jeffery** » Fri Dec 10, 2010 6:41 am

Carole R. wrote:

This is Annie Lennox... 😏



Which Dusty Pic does it remind you of?... (easy peasy).. 😏 😊

CR xx

Actually this pic reminds me of Liz coping Dusty's pose in her leather jacket. 🤔

Top

Re: Similar but different.. (#p42252)

by Cardiff Bluesgirl » Fri Dec 10, 2010 10:33 am

jeffery wrote:

Carole R. wrote:

This is Annie Lennox... 😊




Which Dusty Pic does it remind you of?... (easy peasy).. 😊 😊

CR xx

Actually this pic reminds me of Liz coping Dusty's pose in her leather jacket.



yeah dont I wish 😞

 Dusty-Springfield-Roll-Away-55525-92.jpg

Dusty-Springfield-Roll-Away-55525-92.jpg (70.03 KiB) Viewed 2645 times

Top

Re: Similar but different.. (#p42267)

by Carole R. » Fri Dec 10, 2010 1:30 pm

A. N. Other one:



Clue: Sisters are doin it for themselves"... 😊

CR xx

Top

Re: Similar but different.. (#p42328)

by [Corinna](#) » Fri Dec 10, 2010 9:28 pm



[\(./download/file.php?id=3325&mode=view\)](#)

Looks like a Lana Sister! 😊

Top

Re: Similar but different.. (#p42332)

by [Carole R.](#) » Fri Dec 10, 2010 9:52 pm



Thats the one I had in mind, Corinna!! 🤔


CR xx

Top


Re: Similar but different.. (#p42333)

by **Corinna** » Fri Dec 10, 2010 9:59 pm

I tried to crop Diana's pic, but it doesn't have Dusty's black shirt or eyelashes, so the effect isn't quite the same. But the similarity is undeniable!

 diana copy.jpg

diana copy.jpg (14.02 KiB) Viewed 2623 times

 dusty.jpg

dusty.jpg (5.22 KiB) Viewed 2622 times

Top

Re: Similar but different.. (#p42336)

by **Carole R.** » Fri Dec 10, 2010 10:04 pm

Thanks for that, Corinna... 🤔

It IS a spooky similarity isn't it?... and the cropping does emphasise it more. 😊

CR xx

Top

Re: Similar but different.. (#p48773)

by **Carole R.** » Fri Feb 18, 2011 9:52 pm




CR xx

Top

Re: Similar but different.. (#p48799)

by **Cas19** » Sat Feb 19, 2011 10:18 am

This is the only one I can think of Carole.

 Image

Casx

Top

Re: Similar but different.. (#p48801)

by **daydreamer** » Sat Feb 19, 2011 10:37 am

And you know something.....they had very similar legs 🤪

Top

Re: Similar but different.. (#p48807)

by **Carole R.** » Sat Feb 19, 2011 11:37 am

Spot on Cas!! 🤔

Yes, there *is* a certain similarity in the Leg Department. 🤔 😊

CR xx

Top

Re: Similar but different.. (#p48818)

by **Cas19** » Sat Feb 19, 2011 1:20 pm

Yes I'd have to agree with you both re the legs!

Casx

Top

Re: Similar but different.. (#p86259)

by **Carole R.** » Wed Jan 25, 2012 12:35 pm

Hint: Forget the hat. 😊



CR xx

Top

Re: Similar but different.. (#p86277)

by **daydreamer** » Wed Jan 25, 2012 2:35 pm

This one maybe?



(./download/file.php?id=7970&mode=view)

Top

Re: Similar but different.. (#p86338)

by **Carole R.** » Thu Jan 26, 2012 11:48 am

Thanks for giving it a go, Carole.. 🙏

However, the pic I had in mind was the time she was explaining about her shortsightedness and looking into a mirror.

Thinking 'bout it.. I might have *thought* there was a pic, but could be just remembering that video. 😞

if thats the case... I couldn't better your pic!.. 😊 😊

CR xx

Top

Re: Similar but different.. (#p86345)

by **Cardiff Bluesgirl** » Thu Jan 26, 2012 2:56 pm

yes I cant find that one either but there is this one 😊



[\(./download/file.php?id=7977&mode=view\)](#)

Top

Re: Similar but different.. (#p86347)

by Cardiff Bluesgirl » Thu Jan 26, 2012 3:33 pm

and this too with THE SUIT ,I couldnt resist.. 😊 😊


zdust76.jpg (21.96 KiB) Viewed 2062 times

Top


Re: Similar but different.. (#p86355)



by [daydreamer](#) » Thu Jan 26, 2012 6:14 pm

Carole R. wrote:

Thanks for giving it a go, Carole.. 

However, the pic I had in mind was the time she was explaining about her shortsightedness and looking into a mirror.

Thinking 'bout it.. I might have *thought* there was a pic, but could be just remembering that video. 

if thats the case... I couldn't better your pic!..  

CR xx

I thought you were probably thinking of that clip but unless someone has posted a screen cap from the show, I don't think here is an actual photo. We've just seen it so often, we think there is!



Top



Re: Similar but different.. (#p86371)

by **allherfaces** » Thu Jan 26, 2012 8:46 pm

daydreamer wrote:

Carole R. wrote:

Thanks for giving it a go, Carole.. 
However, the pic I had in mind was the time she was explaining about her shortsightedness and looking into a mirror.
Thinking 'bout it.. I might have *thought* there was a pic, but could be just remembering that video. 

if thats the case... I couldn't better your pic!..  

CR xx

I thought you were probably thinking of that clip but unless someone has posted a screen cap from the show, I don't think here is an actual photo. We've just seen it so often, we think there is!


What a wonderful clip it is! Perhaps Cas could do a screengrab?

Top

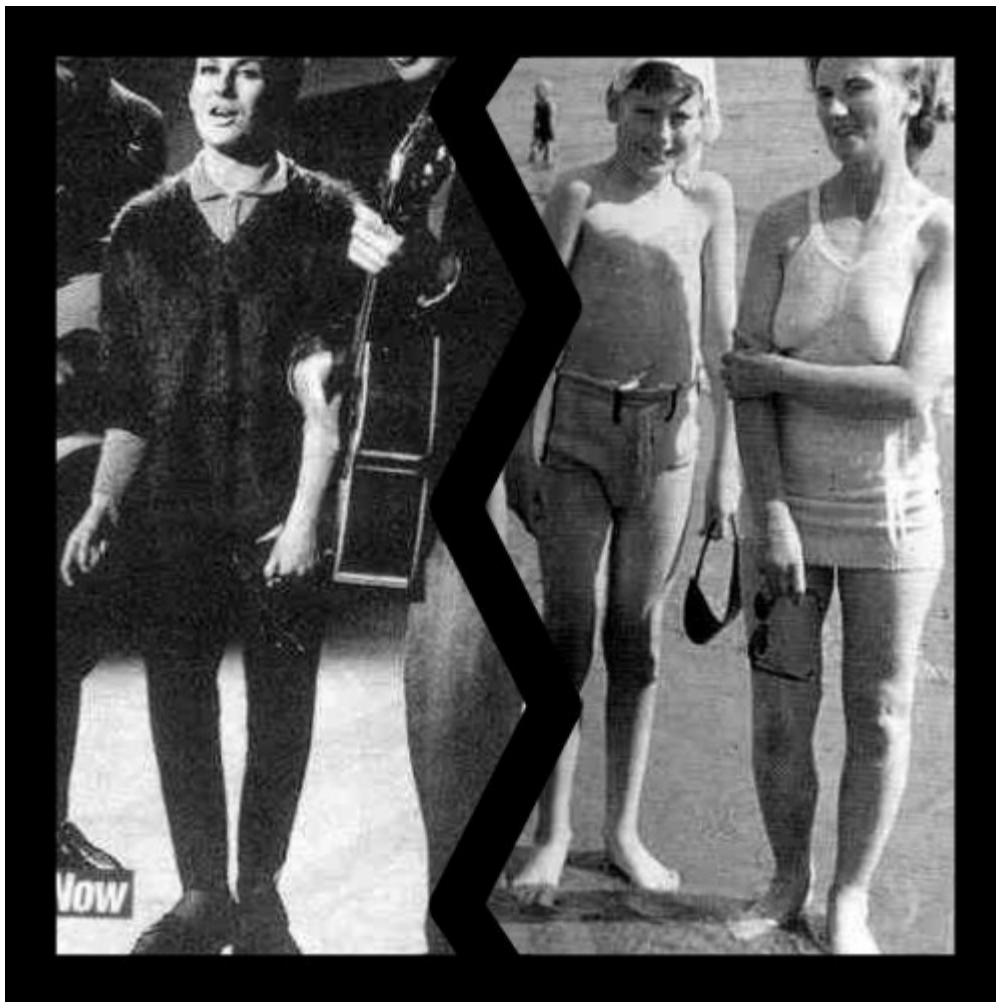
Re: Similar but different.. (#p121179)

by **Beautiful soul** » Wed May 15, 2013 7:02 pm

daydreamer wrote:

And you know something.....they had very similar legs 

How about this for similar legs?



[\(./download/file.php?id=13711&mode=view\)](#)

Top

Display posts from previous: Sort by

Post a reply

64 posts • Page **1** of **1**

[Return to Don't Forget About Me](#)

Jump to:

Who is online

Users browsing this forum: No registered users and 14 guests

Powered by phpBB® Forum Software © phpBB Group :: Style: L_Antre