

# Let's Talk Dusty!

The Ultimate Forum for Dusty Springfield Fans

[Skip to content](#)

[Advanced search](#)

- [Board index](#) < [Let's Talk Dusty! The Forum](#) < [Don't Forget About Me](#)
- [Change font size](#)
- [Print view](#)
- [FAQ](#)
- [Register](#)
- [Login](#)

## [Tower Bridge 60's Exhibition](#)

[Post a reply](#)

4 posts • Page 1 of 1

### [Tower Bridge 60's Exhibition](#)

by [davdreamer](#) » Sun May 04, 2014 7:43 am

Has anyone been to see this exhibition and does anyone know how long it's on for (can't find any info)? Dusty is included but even if she wasn't, I'd still love to see it. I've been in the bowels of the bridge but never up at the top and it looks amazing.

<https://www.flickr.com/photos/themodgen...3461000164>

There's a part of you, that's a part of me...

Carole x



[davdreamer](#)

Moderator



**Posts:** 3667

**Joined:** Thu Dec 17, 2009 8:17 am

**Location:** Cheshire, England

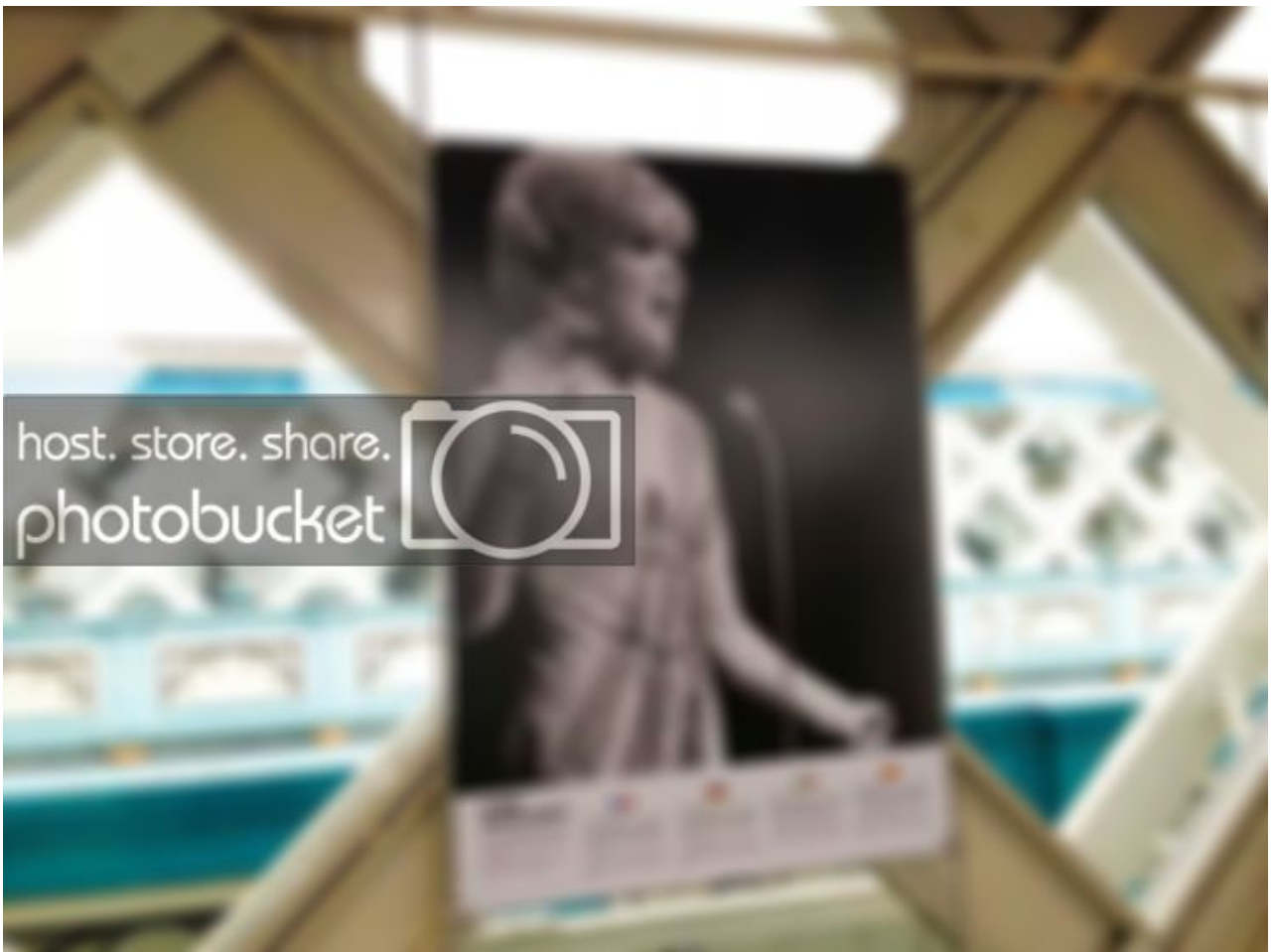
[Top](#)

---

### [Re: Tower Bridge 60's Exhibition](#)

by [Cas19](#) » Sun May 04, 2014 9:59 am

I saw this on FB but I know nothing more about it Carole sorry. it'd be great to visit and see Dusty up there.



Casx  
Something in your eyes



[Cas19](#)

All I see is you  
★★★★★★★★  
★★★★

Posts: 23263  
Joined: Thu Dec 17, 2009 8:25 am

[Top](#)

---

### [Re: London Bridge 60's Exhibition](#)

by [pat.dunham](#) » Sun May 04, 2014 12:16 pm

Problem solved, Carole you made the often quoted mistake, it's not London Bridge it's TOWER BRIDGE.  
<http://www.towerbridge.org.uk/TBF/EN/Exhibitions.htm>

Hope this helps.  
I'd rather see the world the way it used to be.....  
..I'm goin' back.

Pat x



[pat.dunham](#)

Can I get a witness  
★★★★★★

Posts: 4601

**Joined:** Wed Jun 06, 2012 6:41 pm  
**Location:** Hertfordshire UK

[Top](#)

---

**[Re: Tower Bridge 60's Exhibition](#)**

by [daydreamer](#) » Sun May 04, 2014 3:34 pm

That was a brain freeze in my typing of the heading Pat (changed now), I knew it was Tower Bridge, the exhibition is on the high walk way between the towers. I was searching the right bridge, just can't find any info on the length of the exhibition, only that it started in March.

*There's a part of you, that's a part of me...*

Carole x



[daydreamer](#)

Moderator



**Posts:** 3667

**Joined:** Thu Dec 17, 2009 8:17 am

**Location:** Cheshire, England

[Top](#)

---

Display posts from previous:  Sort by

---

[Post a reply](#)

4 posts • Page 1 of 1

[Return to Don't Forget About Me](#)

Jump to:

**Who is online**

Users browsing this forum: No registered users and 13 guests

- [Board index](#)
- [The team](#) • [Delete all board cookies](#) • All times are UTC

Powered by [phpBB®](#) Forum Software © phpBB Group :: Style: [L\\_Antre](#)